

**MTEKPOWER**

**MTEKPOWER**

**Powering  
the Future of  
Sustainable  
Mobility**

*Smart. Fast. Reliable.  
Future-Ready EV Charging  
Solutions for Tomorrow.*

**MTEKPOWER**

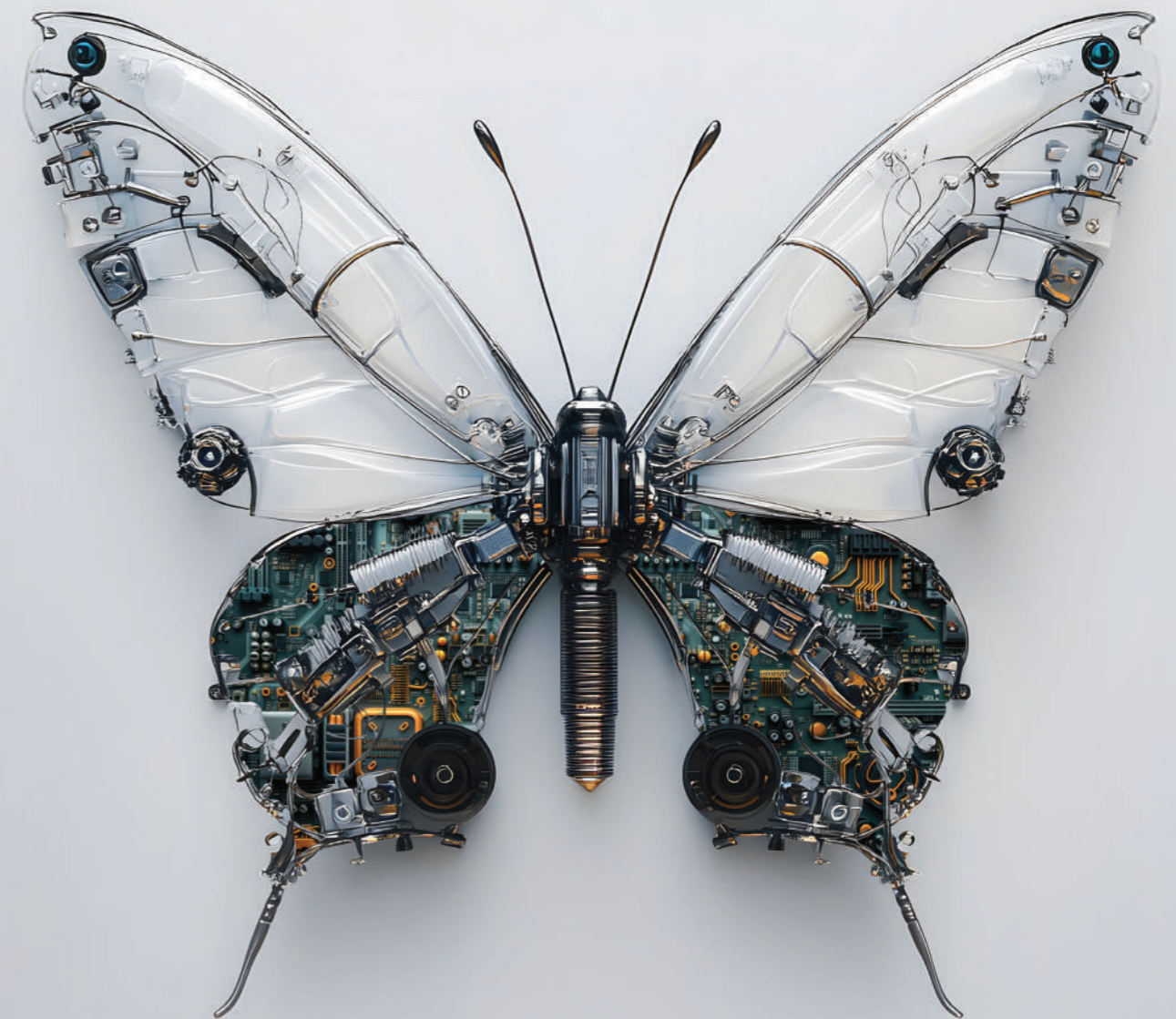
**Head Office**

H-19 Udyog Nagar, Rohtak Road,  
New Delhi - 110041 INDIA

✉ [info@mtkpower.com](mailto:info@mtkpower.com)

🌐 [www.mtkpower.com](http://www.mtkpower.com)

☎ 011-4257 0909, 1800 202 6193



**EV CHARGING SOLUTIONS** PRODUCT BROCHURE

**MTEKPOWER**

EVCS

Your Guide to  
Advanced Energy  
Solutions

A Comprehensive Range of  
Advanced **Energy & EV Charging** Solutions





# MTEKPOWER

## Pioneering Next-Gen Energy Solutions

MTEKPOWER delivers cutting-edge energy system integration products, solutions, and services across a wide range of industries, from Information Technology and Telecom, Renewable Energy Storage, and Electric Vehicles to Smart Cities and other advanced energy storage applications. Backed by over four decades of expertise, MTEKPOWER stands as a global leader in industrial and domestic battery technologies, offering an innovative, reliable, and diverse product portfolio trusted worldwide.

### Versatile & Future-Ready EV Charging Solutions

MTEKPOWER chargers are engineered for compatibility with all major electric vehicle standards, including IEC 60309 (Bharat AC001), IEC 62196-2 (Type-2 AC), CCS-2, CHAdeMO, and GB/T. Our AC chargers support voltage ranges from 230V to 415V AC, while our DC chargers operate efficiently between 200V to 1000V DC - ensuring reliable and seamless charging across a diverse spectrum of electric vehicles. Designed for flexibility and performance, MTEKPOWER chargers deliver robust solutions tailored to meet the evolving needs of the EV ecosystem.

### Key Features

- **Multi-Standard Compatibility:** Supports multiple global charging standards within a single, advanced unit
- **Sleek & Compact Design:** Optimized for easy installation, space-saving, and user-friendly operation
- **High Efficiency & Low Harmonics:** Delivers superior efficiency with minimal harmonic distortion, no additional power compensation required
- **Modular, Hot-Swap Architecture:** Enables quick maintenance and component replacement, ensuring minimal downtime
- **Comprehensive Charging Solutions:** Offers both AC and DC options to suit a wide range of vehicle types and charging needs

MTEKPOWER - *Shaping the Future of Energy Solutions*

**MTEKPOWER**



OUR  
PRESTIGIOUS  
KEY CLIENTS



# MTEKPOWER

## EVCS Installations

Empowering the Growth of **60,000+** Individuals and Over **537** Companies in the EV Sector.



**Installed Capacity:** 15KW to 142 KW  
**Type:** DC Charger  
**Total Charging Station:** 150 Nos.  
**Installed in 8 States:** Delhi, Goa, Gujarat, Haryana, Maharashtra, Tamil Nadu, Uttar Pradesh & West Bengal



**Installed Capacity:** 15 KW to 30 KW  
**Type:** DC Charger  
**Total Charging Station:** 7 Nos.  
**Installed in 4 States:** Uttar Pradesh, Uttrakhand, Maharashtra & Gujarat



**Installed Capacity:** 50 KW  
**Type:** DC Charger  
**Total Charging Station:** 230 Nos.  
**Installed in 31 Locations:** Jalandhar, Agra, Aurangabad, Bengaluru, Bhatinda, Bhopal, Bhubaneswar, Chennai, Delhi, Durgapur, Vasco-Da-Gama, Gorakhpur, Kanpur, Kolkata, Lucknow, Meerut, Nagpur, Nasik, Nellore, Pune, Ranchi, Mumbai, Sambalpur, Secunderabad, Sholapur, Trichy, Varanasi, Navi Mumbai, Visakhapatnam, Bilaspur, Raipur, Uttar Pradesh



**Installed Capacity:** 15 KW to 30 KW  
**Type:** DC Charger  
**Total Charging Station:** 610 Nos.  
**Installed in 24 States:** Andhra Pradesh, Assam, Bihar, Chandigarh, Delhi, Goa, Gujarat, Haryana, Jammu And Kashmir, Jharkhand, Karnataka, Kerala, Madhya Pradesh, Maharashtra, Manipur, Nagaland, Odisha, Punjab, Rajasthan, Tamil Nadu, Telangana, Tripura, Uttar Pradesh & West Bengal.



**Installed Capacity:** 10KW to 142 KW  
**Type:** AC & DC Charger  
**Total Charging Station:** 174 Nos.  
**Installed in 8 States:** Goa, Himachal, Jharkhand, Karnataka, Maharashtra, Rajasthan & Telangana



**Installed Capacity:** 150 KW  
**Type:** AC & DC Charger  
**Total Charging Station:** 54 Nos.



**Installed Capacity:** 150 KW  
**Type:** DC Charger  
**Total Charging Station:** 8 Nos.



**Installed:** Haryana  
**Type:** DC Charger  
**Total Charging Station:** 8 Nos.



**Installed Capacity:** 15 KW to 30 KW  
**Type:** AC Charger  
**Total Charging Station:** 1,002 Nos.  
**Installed in 18 States:** Andhra Pradesh, Assam, Bihar, Delhi, Haryana, Himachal Pradesh, Jammu & Kashmir, Jharkhand, Karnataka, Ladakh, Manipur, Mizoram, Punjab, Telangana, Tripura & Uttar Pradesh East, Uttarakhand & West Bengal



**Installed Capacity:** 150 KW  
**Type:** DC Charger  
**Total Charging Station:** 8 Nos.



**Installed:** Gujrat  
**Type:** DC Charger  
**Total Charging Station:** 5 Nos.



**Installed:** PAN India  
**Type:** DC Charger  
**Total Charging Station:** 75 Nos.

# MTEKPOWER

## EV CHARGERS FOR 2 & 3 WHEELER

Portable EV Charger

48V08A | 72V06A | 60V08A



# MTEKPOWER

## EV CHARGERS FOR 2 & 3 WHEELER

Portable EV Charger

OLBC 4830 | 4815 | 5130 | 60V27A



PARAMETERS	48V 08A		72V 10A		60V 10A	
	Value	Remarks	Value	Remarks	Value	Remarks
<b>INPUT CHARACTERISTICS</b>						
RATED VOLTAGE	230VAC ± 10%, 50Hz					
WIRES	2 Wires L, N, PE		3 Wires L, N, PE			
<b>OUTPUT CHARACTERISTICS</b>						
RATED OUTPUT VOLTAGE	54.75 VDC		72 VDC		60 VDC	
OUTPUT VOLTAGE RANGE	48 ~ 71 VDC					
OUTPUT RATED CURRENT	8A		10A		10A	
STABILIZATION ACCURACY	±0.3					
<b>COMMUNICATION</b>						
CAN	Can Communications		1-0xFE: Single module address 0xFF: broadcast address			
	Baud Rate options		250 Kbps			
	Terminating resistor		Not included			
<b>PROTECTION</b>						
OUTPUT CURRENT LIMIT PROTECTION	110% ~ 150% Iout		at 220VAC, The power supply is locked, shutdown Output			
OUTPUT SHORT	Constant current output after short circuit					
<b>USAGE ENVIRONMENT</b>						
Operating Temperature	-25 ~ +60		Typical value 25°C			
Storage Temperature	-40 ~ +80		Typical value 25°C			
Working Humidity	10% ~ 95% (not frost)					
Storage Humidity	5% ~ 95% (no frost)		Normal work			
Altitude	≤3000					
Cooling Method	Built-in DC fan forced air cooling					

PARAMETERS	4830		4815		5130		60V27A	
	Value	Remarks	Value	Remarks	Value	Remarks	Value	Remarks
<b>INPUT CHARACTERISTICS</b>								
RATED VOLTAGE	230VAC ± 10%, 50Hz							
WIRES	3 Wires L, N, PE							
<b>OUTPUT CHARACTERISTICS</b>								
RATED OUTPUT VOLTAGE	54.75 VDC		54.75 VDC		58.4 VDC		60 VDC	
OUTPUT VOLTAGE RANGE	48 ~ 71 VDC		48 ~ 71 VDC		48 ~ 71 VDC		48 ~ 71 VDC	
OUTPUT RATED CURRENT	30A		15A		30A		27A	
STABILIZATION ACCURACY	±0.3							
<b>COMMUNICATION</b>								
CAN	Can Communications		1-0xFE: Single module address 0xFF: broadcast address					
	Baud Rate options		250 Kbps					
	Terminating resistor		Not included					
<b>PROTECTION</b>								
OUTPUT CURRENT LIMIT PROTECTION	110% ~ 150% Iout		at 220VAC, The power supply is locked, shutdown Output					
OUTPUT SHORT	Constant current output after short circuit							
<b>USAGE ENVIRONMENT</b>								
Operating Temperature	-25 ~ +60		Typical value 25°C					
Storage Temperature	-40 ~ +80		Typical value 25°C					
Working Humidity	10% ~ 95% (not frost)							
Storage Humidity	5% ~ 95% (no frost)		Normal work					
Altitude	≤3000							
Cooling Method	Built-in DC fan forced air cooling							

**EV CHARGERS FOR**

**4 WHEELER**



**MTEKPOWER**

**MTEKPOWER**



**BHARAT AC001**

EV CHARGER

**3.3kW**

The **MTEKPOWER Bharat AC001 EV Charger** is a compact, AC slow charging station designed for Indian electric vehicles. Featuring a single socket, it enables rapid deployment of charging networks, providing efficient slow charging. Built with a durable, weatherproof enclosure, it is suitable for both indoor and outdoor use. Ideal for public parking, government offices, and enterprise parking lots, this charger ensures reliable and convenient charging infrastructure.

**KEY FEATURES**

- Compact and modern design for seamless integration into any environment
- 3.3kW model equipped with a single IEC 60309 socket for efficient charging
- IP 55 rating ensures reliable performance in harsh weather conditions
- Simple installation and user-friendly operation for hassle-free use
- 4.3" full-color touchscreen display, easily readable even in direct sunlight
- Fully compatible with Open Charge Point Protocol (OCPP) for flexible integration
- Supports multiple charging methods: App Scan Code, RFID Card, and QR Code
- Compliant with BEVC-AC001 EV standard for optimal performance and safety

CAPACITY		MODELS
		3.3kW
INPUT POWER	Input Voltage (AC)	230 VAC ±15%, 50Hz ±3%
	Wires	3 Wire (L, N, PE)
OUTPUT POWER	Number of Outputs	1 Nos.
	Output Connector	IEC 60309
	Output 1 Rating	230 VAC, 16 Amp.
ENVIRONMENT	Ambient Temperature	0°C to 55°C
	Storage Temperature	0°C to 60°C
	Altitude	<2000 mtr
	Humidity	5% to 95%, non-condensing
USER INTERFACE AND CONTROL FUNCTIONS	Display Screen	4.3" LCD TFT Touch Screen
	Languages - Supported	English
	Push Button	Emergency Stop
	Visual Indication	Using LED
	User Authentication	Using mobile application or User Interface (OCPP gives only a field mandate, media to be used is open) / QR Code / RFID Card / Password Login
PROTECTION	Protection	Over Voltage, Under Voltage, Over Current, Short Circuit, Surge Protection, Over Temperature, Ground Fault Protection, Residual Current, Emergency Shutdown with alarm, Protection against electric shock
COMMUNICATION	Charger and Vehicle	As per BEVC-AC001 Specification
	Charger and CMS	OCPP v1.6 or above - 10/100 Base - T Ethernet (Standard) or Optical GSM Modem (2G/3G/4G) and Wireless (Optional)
MECHANICAL	Ingress Protection	Indoor & Outdoor
	IP Rating	IP 55

*Subject to change without prior notice.*

**MTEKPOWER**



**PORTABLE**

EV CHARGER

**3.5kW**

The **Portable EV Charger** is a compact AC charging station designed for home use. Featuring a simple system with a small footprint, it offers convenient handling and effortless operation.



**KEY FEATURES**

- Compact Design for easy storage and portability
- 3.5kW Slow Charging for efficient power delivery
- IP66 Rated robust, all-weather enclosure for both indoor and outdoor use
- No Installation Required, just plug in and charge with Daylight-Readable Display for key charging parameters
- Compatible with Type-2 Vehicles for wide application
- Plug-and-Play with automatic start functionality
- EV Standards: IEC 62196, IEC 61851

CAPACITY		MODELS
		3.5kW
INPUT POWER	Input Voltage (AC)	230 VAC ±15%, 50Hz ±3%
	Wires	3 Wire (L, N, PE)
OUTPUT POWER	Number of Outputs	1 Nos.
	Output Connector	IEC 62196-2 Type 2
	Output 1 Rating	230 VAC, 16 Amp.
ENVIRONMENT	Ambient Temperature	-30°C to 50°C
	Storage Temperature	-40°C to 70°C
	Altitude	<2000 mtr
	Humidity	5% to 95%, non-condensing
USER INTERFACE AND CONTROL FUNCTIONS	Display Screen	LCD Screen
	Languages - Supported	English
	Push Button	Current Adjust Button (8A / 10A / 13A / 16A)
	Visual Indication	Using LED
	User Authentication	Plug & Charge
PROTECTION	Protection	Over Voltage, Under Voltage, Over Current, Surge Protection, Over Temperature, Ground Fault Protection, Residual Current
COMMUNICATION	Charger and Vehicle	IEC 62196, IEC 61851
MECHANICAL	Ingress Protection	Indoor & Outdoor
	IP Rating	IP 66

*Subject to change without prior notice.*

**MTEKPOWER**



**AC WALLBOX**

**EV CHARGER**

**7.4kW**

The AC Wallbox 7.4kW is a compact AC charging station designed for homes, offices, and other residential and commercial locations. Its user-friendly system offers a small footprint, easy installation, and simple operation.



**KEY FEATURES**

- Compact Design for efficient space utilization
- 7.4kW Fast Charging for quick and reliable power delivery
- IP55 Rated robust, all-weather enclosure for indoor and outdoor use
- Effortless Installation and operation at various locations
- 4.3" Daylight-Readable Touchscreen for clear visibility
- Open Charge Point Protocol (OCPP) Compatibility for flexible integration
- Supports APP Scan Code / RFID Card Charging
- EV Standards: IEC 62196, IEC 61851

CAPACITY		MODELS
		7.4kW
INPUT POWER	Input Voltage (AC)	230 VAC ±15%, 50Hz ±3%
	Wires	3 Wire (L, N, PE)
OUTPUT POWER	Number of Outputs	1 Nos.
	Output Connector	IEC 62196-2 Mode 3, Type 2
	Output 1 Rating	230 VAC, 32 Amp.
ENVIRONMENT	Ambient Temperature	-20°C to 55°C
	Storage Temperature	0°C to 60°C
	Altitude	<2000 mtr
	Humidity	5% to 95%, non-condensing
USER INTERFACE AND CONTROL FUNCTIONS	Display Screen	4.3" LCD TFT Touch Screen
	Languages - Supported	English
	Push Button	Emergency Stop
	Visual Indication	Using LED
	User Authentication	Using mobile application or User Interface (OCPP gives only a field mandate, media to be used is open)/ QR Code / RFID Card / Password Login
PROTECTION	Protection	Over Voltage, Under Voltage, Over Current, Short Circuit, Surge Protection, Over Temperature, Ground Fault Protection, Residual Current, Emergency Shutdown with alarm, Protection against electric shock
COMMUNICATION	Charger and Vehicle	IEC 62196, IEC 61851
	Charger and CMS	OCPP v1.6 or above - 10/100 Base - T Ethernet (Standard) or Optical GSM Modem (2G/3G/4G) and Wireless (Optional)
MECHANICAL	Ingress Protection	Indoor & Outdoor
	IP Rating	IP 55

*Subject to change without prior notice.*

**MTEKPOWER**



**BHARAT AC001**

EV CHARGER

**10kW**

The **MTEKPOWER Bharat AC001 EV Charger** is a compact AC slow charging station designed to charge 3 vehicles simultaneously. Featuring three 3.3kW IEC 60309 sockets, this charger enables rapid and efficient network deployment. With a durable, all-weather enclosure, it is suitable for both indoor and outdoor use, making it ideal for public parking, government offices, and enterprise parking lots.

**KEY FEATURES**

- Compact and Contemporary Design for seamless integration
- 10kW Model with three 3.3kW IEC 60309 sockets for simultaneous charging
- IP54 Rated robust, all-weather enclosure for indoor and outdoor use
- Easy Installation and Operation for quick setup
- Daylight-Readable 5" Full-Color Touchscreen for clear visibility
- Open Charge point Protocol (OCPP) Compatibility for flexible integration
- Supports APP Scan Code / RFID Card Charging
- EV Standards: IEC 60309 & Indian Standards

CAPACITY		MODELS
		10kW
INPUT POWER	Input Voltage (AC)	415 VAC ±15%, 50Hz ±3%
	Wires	5 Wire (L1, L2, L3, N, PE)
OUTPUT POWER	Number of Outputs	3 Nos.
	Output Connector	IEC 60309
	Output 1 Rating	Each Outlet 230 VAC max, 16 Amp.
ENVIRONMENT	Ambient Temperature	0°C to 55°C
	Storage Temperature	0°C to 60°C
	Altitude	<2000 mtr
	Humidity	5% to 95%, non-condensing
USER INTERFACE AND CONTROL FUNCTIONS	Display Screen	5" LCD TFT Touch Screen
	Languages - Supported	English
	Push Button	Emergency Stop
	Visual Indication	Using LED
	User Authentication	Using mobile application or User Interface (OCPP gives only a field mandate, media to be used is open) / QR Code / RFID Card / Password Login
PROTECTION	Protection	Over Voltage, Under Voltage, Over Current, Short Circuit, Surge Protection, Over Temperature, Ground Fault Protection, Residual Current, Emergency Shutdown with alarm, Protection against electric shock
COMMUNICATION	Charger and Vehicle	As per BEVC-AC001 Specification
	Charger and CMS	OCPP v1.6 or above - 10/100 Base - T Ethernet (Standard) or Optical GSM Modem (2G/3G/4G)
MECHANICAL	Ingress Protection	Indoor & Outdoor
	IP Rating	IP 54

*Subject to change without prior notice.*

**MTEKPOWER**



**AC CHARGER**

**EV CHARGER**

**3.3kW to 7.4kW**

**The MTEKPOWER Bharat AC3.3kW-7.4kW EV Charger**

is a compact AC slow charging station designed to charge 3 vehicles simultaneously. Featuring 3.3kW & 7.4kW 60309 sockets and type-2 gun, this charger enables rapid and efficient network deployment. With a durable, all-weather enclosure, it is suitable for both indoor and outdoor use, making it ideal for public parking, government offices and enterprise parking lots.

**KEY FEATURES**

- Compact and Contemporary Design for seamless integration
- These 3.3kW & 7.4kW IEC 60309 sockets for Type-2 gun for simultaneous charging.
- IP55 Rated robust, all-weather enclosure for indoor and outdoor use.
- Easy Installation and Operation for quick setup
- Open Charge point Protocol (OCPP) Compatibility for flexible integration
- Supports APP Scan Code / RFID Card Charging
- EV Standards: IEC 60309 & Indian Standards

CAPACITY	MODELS			
	3.3kW	3.3kW	7.4kW	7.4kW
CATEGORISATION	Un-smart Version	Smart Version	Un-smart Version	Smart Version
POLES DESCRIPTION	1P + N	1P + N	1P + N	1P + N
MOUNTING MODE	Wall mount Or Pole mount	Wall mount Or Pole mount	Wall mount Or Pole mount	Wall mount Or Pole mount
NUMBER OF CHARGE POINT	1	1	1	1
CONNECTION TO THE VEHICLE	IEC 60309 SOCKET	IEC 60309 SOCKET 230V 16A or Type 2 Gun	Attached 4m cable Type 2 gun	Attached 4m cable Type 2 gun
MAXIMUM POWER	3.3kW	3.3kW	7.4kW	7.4kW
INPUT VOLTAGE/ OUTPUT VOLTAGE	230 VAC ±10% (P+N+PE)			
INPUT FREQUENCY	50Hz and 60Hz			
RFID	Yes	Optional	Optional	Optional
ENERGY METER	Class 1, Onboard Chip	Class 1, Onboard Chip	Class 1, Onboard Chip	Class 1, Onboard Chip
DISPLAY	LED	LED	LED	LED
WI-FI	N/A	Yes	N/A	Yes
APP	Yes	Yes	Yes	Yes
4G	N/A	Optional	N/A	Optional
LAN	NA	Optional	NA	Optional
INTERNET PROTOCOL	NA	OCPP	NA	OCPP
OVER VOLTAGE & UNDER VOLTAGE PROTECTION	Yes	Yes	Yes	Yes
EMERGENCY STOP	Yes	Yes	Yes	Yes
OVER CURRENT PROTECTION	Yes	Yes	Yes	Yes
CP SIGNAL SHORT CIRCUIT PROTECTION	N/A	Yes	Yes	Yes
OVER TEMPERATURE PROTECTION	Yes	Yes	Yes	Yes
LIGHTING PROTECTION	Yes	Yes	Yes	Yes
TYPE A EARTH LEAKAGE PROTECTION	NA	Yes	Yes	Yes
TYPE B EARTH LEAKAGE PROTECTION	NA	Optional	Optional	Optional
BATTERY BACKUP MORE THAN ONE HOUR	NA	Optional	N/A	Optional
PROTECTION DEGREE	IP55	IP55	IP55	IP55
ENVIRONMENT TEMPERATURE	0°C ~ +55 °C	0°C ~ +55 °C	0°C ~ +55 °C	0°C ~ +55 °C
MAXIMUM ALTITUDE	<2000m	<2000m	<2000m	<2000m
STANDARDS	IEC61851   IS17017   IEC/EN 61000			
STANDARDS	395*285*132	450*300*150	450*300*150	450*300*150

Subject to change without prior notice.

# MTEKPOWER

## AC CHARGER

### EV CHARGER

## 7.4kW



The AC Wallbox 7.4kW is a compact AC charging station designed for homes, offices, and other residential and commercial locations. Its user-friendly system offers a small footprint, easy installation, and simple operation.



#### KEY FEATURES

- Compact Design for efficient space utilization
- 7.4kW Fast Charging for quick and reliable power delivery
- IP55 Rated robust, all-weather enclosure for indoor and outdoor use
- Effortless Installation and operation at various locations
- 4.3" Daylight-Readable Touchscreen for clear visibility
- Open Charge Point Protocol (OCPP) Compatibility for flexible integration
- Supports APP Scan Code / RFID Card Charging
- EV Standards: IEC 62196, IEC 61851

CAPACITY	MODELS
	7.4kW
PRODUCT NAME	7.4kW CTA
CATEGORISATION	Smart Version
POLES DESCRIPTION	1P + N
MOUNTING MODE	Wall mount Or Pole mount
NUMBER OF CHARGE POINT	1
CONNECTION TO THE VEHICLE	Attached 4m cable Type 2 gun
MAXIMUM POWER	7.4kW
INPUT VOLTAGE/ OUTPUT VOLTAGE	230 VAC ±10% (P+N+PE)
INPUT FREQUENCY	50Hz and 60Hz
RFID	Yes
ENERGY METER	Class 1, Onboard Chip
DISPLAY	4.5" touch and LED
WI-FI	N/A
APP	N/A
4G	Optional
LAN	Optional
INTERNET PROTOCOL	OCPP1.6 or more, WS, WSS
OVER VOLTAGE & UNDER VOLTAGE PROTECTION	Yes
EMERGENCY STOP	Yes
OVER CURRENT PROTECTION	Yes
CP SIGNAL SHORT CIRCUIT PROTECTION	Yes
OVER TEMPERATURE PROTECTION	Yes
LIGHTING PROTECTION	Yes
TYPE A EARTH LEAKAGE PROTECTION	Yes
BATTERY BACKUP MORE THAN ONE HOUR	Optional
PROTECTION DEGREE	IP55
ENVIRONMENT TEMPERATURE	0°C ~ +55°C
MAXIMUM ALTITUDE	<2000m
STANDARDS	IEC61851   IS17017   IEC/EN 61000

Subject to change without prior notice.

**MTEKPOWER**

**AC WALLBOX**

EV CHARGER

**22kW**



**KEY FEATURES**

The AC Wallbox 22kW is a compact AC charging station designed for homes, offices, and various residential and commercial locations. With a simple system, small footprint, and easy installation, it ensures hassle-free operation.

- Compact and modern Design for easy installation and space efficiency
- 22kW Fast Charging for rapid and reliable power delivery
- IP55 Rated robust, all-weather enclosure for both indoor and outdoor use
- Simple Installation or Retrofitting at various locations
- 4.3" Daylight-Readable Full-Color Touchscreen for easy navigation
- Open Charge point Protocol (OCPP) Compatibility for seamless integration
- Supports APP Scan Code / RFID Card Charging
- EV Standards: IEC 62196, IEC 61851



CAPACITY		MODELS
		22kW
INPUT POWER	Input Voltage (AC)	415 VAC ±15%, 50Hz ±3%
	Wires	5 Wire (L1, L2, L3, N, PE)
OUTPUT POWER	Number of Outputs	1 Nos.
	Output Connector	IEC 62196-2 Mode 3, Type 2
	Output 1 Rating	380-480 VAC, 32 Amp.
ENVIRONMENT	Ambient Temperature	0°C to 55°C
	Storage Temperature	0°C to 60°C
	Altitude	<2000 mtr
	Humidity	5% to 95%, non-condensing
USER INTERFACE AND CONTROL FUNCTIONS	Display Screen	4.3" LCD TFT Touch Screen
	Languages - Supported	English
	Push Button	Emergency Stop
	Visual Indication	Using LED
	User Authentication	Using mobile application or User Interface (OCPP gives only a field mandate, media to be used is open) / QR Code / RFID Card / Password Login
PROTECTION	Protection	Over Voltage, Under Voltage, Over Current, Short Circuit, Over Temperature, Ground Fault Protection, Residual Current, Emergency Shutdown with alarm, Protection against electric shock
COMMUNICATION	Charger and Vehicle	IEC 62196, IEC 61851
	Charger and CMS	OCPP v1.6 or above - 10/100 Base - T Ethernet (Standard) or Optical GSM Modem (2G/3G/4G) and Wireless (Optional)
MECHANICAL	Ingress Protection	Indoor & Outdoor
	IP Rating	IP 55

Subject to change without prior notice.

**MTEKPOWER**



**AC CHARGER**

EV CHARGER

**60-180kW**

The Mtekpowers Dual Gun Quick DC Charger (Supremo DC 60kW/120kW/180kW) is specifically designed to meet the fast-charging needs of public transport vehicles and fleet operations. With a robust charger base, advanced logistics, intelligent controls, and back-end support, it offers an efficient, safe, and comprehensive charging solution for growing public transport systems. This high-power charger supports rapid network deployment and provides reliable charging for electric vehicles with an all-weather durable enclosure, meeting the CCS2 standard.



**FEATURES**

- High-Power Quick Charging for fast and efficient service
- Robust and All-Weather Enclosure (IP55) for both indoor and outdoor use
- Easy Installation and Maintenance for hassle-free operation
- Max 200-100VDC High Output Current for fast vehicle Turn around
- 7" Full-Color Touchscreen Display for user-friendly operation
- RFID Reader for secure access and management
- Intuitive Human-Machine Interface for seamless interaction
- Future-proof Connectivity with OCPP 1.6 and beyond
- Wide DC Output Voltage Range (200-1000VDC) ensuring compatibility with all EVs
- Modular Architecture for flexible scalability

CAPACITY		MODELS		
		60kW	120kW	180kW
MODEL		Supremo 60kW, 120kW, 180kW		
INPUT PARAMETERS	Wires	3 - Phase, 5 - lines Wire AC ( 3PH+N+PE) Permanently connected		
	Input Voltage	415 VAC (±10%)		
	Input Frequency	50H±1.5Hzz		
	THD	≥ 5% of Nominal Voltage		
	Power Factor	PF≥ 0.9 (25%~50%Full Load)		
OUTPUT PARAMETERS	Output Voltage	200 ~ 1000 Vdc		
	Output Current	200A MAX Each Gun		
	Gun type	CCS - 2 (Mode 4)		
	Number of Connector/Gun	2		
	Efficiency	≥ 95% (full load)		
ENVIRONMENT	Operating temperature	-20°C~55°C		
	Humidity	5~95%		
	Pressure	86kpa~106kpa		
	Pollution degree	3		
	Storage temperature	-25°C~70°C		
MECHANICAL	Cooling	Forced air cooling		
	Impact	IK10		
	IP degrees	IP55		
SAFETY PROTECTION FUNCTION	Over voltage, under voltage, Over current short circuit (Input and Output)			
	Surge protection, Over temperature			
	Insulation monitoring			
	Emergency shutdown			
	Earth Presence Detection (Socket - EVSE)			
	Earth Continuity Check (EVSE-EV)			
	Leakage Current and Class I equipment			
OCPP COMPLIANT & VERSION	OCPP1.6J Complied			
CERTIFICATIONS	As per IS 17017			
USER INTERFACE	7 inches LCD Touch screen display			
AUTHORISATION	OTP, RFID, Password, OCPP			
INTERNET CONN.	4G modem (M2M) / LAN			
BATTERY BACKUP IN CASE OF EB FAIL	15 minutes minimum			
METERING	Dual channel DC Energy meter for output with 0.5% accuracy class			
DOOR OPEN SWITCH	Key Lock with Door sensor			

Subject to change without prior notice.

**MTEKPOWER**

**BHARAT DC001**

EV CHARGER

**15kW - 30kW**



**KEY FEATURES**

The MTEKPOWER Bharat DC001 EV Charger is a compact DC slow charging station available in 3 variants with Single/Dual Gun technology. It offers high-power charging for electric vehicles and provides an efficient and rapid charging network. With a durable, all-weather enclosure, it is suitable for both indoor and outdoor use, supporting vehicles with GB/T standards. Ideal for public parking, government offices, fleet management, and enterprise parking lots.

- Compact and Contemporary Design for easy integration
- 15kW to 30kW Continuous DC Slow Charging for high-power delivery
- IP54 Rated robust, all-weather enclosure
- Easy Installation and Operation at various locations
- High Output Current on both single and dual outlets
- 7" Daylight-Readable Full-Color Touchscreen for intuitive navigation
- Open Charge point Protocol (OCPP) Compatibility for seamless integration
- Supports APP Scan Code / RFID Card Charging
- EV Standards: GB/T and BEVC-DC001

CAPACITY		MODELS		
		15kW	20kW	30kW
INPUT PARAMETERS	Input Voltage (Vac)	415 VAC ±15%, 50Hz ±3%		
	THD	≥ 5% of Nominal Voltage		
	Power Factor	≥ 0.99 (Full Load)		
	Wires	3 - Phase, 5 - Wire AC ( L1, L2, L3, N and PE)		
POWER OUTPUT	Output Voltage & Current	40 - 100 Vdc, Max 200 Amp. at each gun	40 - 100 Vdc, Max 100 Amp. at each gun	40 - 100 Vdc, Max 200 Amp. at each gun
	Standard/Connector	GB/T 20234.3		
	Number of Connector/Gun	1	2	2
	Efficiency	≥ 94% (full load)		
PROTECTION AND SAFETY	Safety Parameters	Over Voltage, Under Voltage, Over Current, Short Circuit, Surge Protection, Over Temperature, Ground Fault Protection, Residual Current, Emergency Shutdown with alarm, Protection against electric shock		
USER INTERFACE AND CONTROL FUNCTIONS	Display Screen	7" LCD TFT Touch Screen		
	Languages - Supported	English		
	Push Button	Emergency Stop (Mushroom Red)		
	Visual Indication	Presence of Input Supply, Errors Indicators, State of Charge		
	User Authentication	Using mobile application or User Interface (OCPP gives only a field mandate, media to be used is open) / QR Code / RFID Card / Password Login		
COMMUNICATION	Payment	RFID Card Wallet or App Wallet / Service		
	Between EV Charger & EV	CAN base Communication		
	Between EV & Central Server	OCPP v1.6 or above - 10/100 Base-T Ethernet (Standard) or Optical GSM Modem (2G/3G/4G)		
MECHANICAL	Protection	IP 54		
	Cooling	Forced Air Cooling		
	Charging Cable Length	5 Meter		
	Operating Temperature	0°C to 55°C		
	Storage Temperature	0°C to 60°C		
Humidity (Non-Condensing)	5% TO 95%			

Subject to change without prior notice.

**MTEKPOWER**



**DC WALLBOX**

**EV CHARGER**

**30kW**

The MTEKPOWER DC Wallbox is a compact 30kW DC fast charger, delivering rapid and high-power charging services for electric vehicles. Designed for both indoor and outdoor use, it features a durable, all-weather enclosure and supports the CCS-2 standard. Ideal for public parking, fleet management, and enterprise parking lots.



**KEY FEATURES**

- Compact and Contemporary Design for efficient space utilization
- 30kW Continuous Fast Charging for quick power delivery
- IP54 Rated robust, all-weather enclosure
- 100A High Output Current for rapid charging
- 7" Daylight-Readable Full-Color Touchscreen for easy navigation
- Open Charge point Protocol (OCPP) Compatibility for seamless integration
- Supports APP Scan Code / RFID Card Charging
- Space-Saving Wall Mount Design for simple installation
- EV Standards: IEC 62196, IEC 61851

CAPACITY		MODELS
		30kW
INPUT PARAMETERS	Input Voltage (Vac)	415 VAC ±15%, 50Hz ±3%
	THD	≥ 5% of Nominal Voltage
	Power Factor	≥ 0.99 (Full Load)
	Wires	3 - Phase, 5 - Wire AC ( L1, L2, L3, N and PE)
POWER OUTPUT	Output Voltage & Current	200 - 1000 VDC / 100A (Max)
	Standard/Connector	CCS - 2
	Number of Connector/Gun	Single Gun Charging
	Efficiency	≥ 94% (full load)
PROTECTION AND SAFETY	Safety Parameters	Over Voltage, Under Voltage, Over Current, Short Circuit, Surge Protection, Over Temperature, Ground Fault Protection, Residual Current, Emergency Shutdown with alarm, Protection against electric shock
USER INTERFACE AND CONTROL FUNCTIONS	Display Screen	7" LCD TFT Touch Screen
	Languages - Supported	English
	Push Button	Emergency Stop (Mushroom Red)
	Visual Indication	Presence of Input Supply, Errors Indicators, State of Charge
	User Authentication	Using mobile application or User Interface (OCPP gives only a field mandate, media to be used is open) / QR Code / RFID Card / Password Login
COMMUNICATION	Payment	RFID Card Wallet or App Wallet / Service
	Between EV Charger & EV	IEC 62196, IEC 61851
	Between EV & Central Server	OCPP v1.6 or above - 10/100 Base-T Ethernet (Standard) or Optical GSM Modem (2G/3G/4G)
MECHANICAL	Protection	IP 54
	Cooling	Forced Air Cooling
	Charging Cable Length	5 Meter
	Operating Temperature	0°C to 55°C
	Storage Temperature	0°C to 60°C
	Humidity (Non-Condensing)	5% TO 95%

Subject to change without prior notice.

**MTEKPOWER**

**SINGLE/DUAL  
GUN QUICK**

**DC CHARGER**

**60kW - 150kW**



The **MTEKPOWER Dual Gun Quick DC** Charger is a high-performance, all-in-one charging solution, delivering rapid and reliable high-power charging for electric vehicles. With its durable, all-weather enclosure, it is designed for both indoor and outdoor use and supports the CCS-2 standard. Perfect for highways, public parking, bus stations, and corporate parking spaces.

**KEY FEATURES**

- Compact and Contemporary Design for efficient space utilization
- High-Power Continuous Fast Charging for quick and reliable service
- IP54 Rating ensuring protection in all weather conditions
- Dual CCS-2 Outlets for simultaneous charging of two vehicles
- 7" Daylight-Readable Full-Color Touchscreen for easy operation
- Open Charge point Protocol (OCPP) Compatibility for seamless network integration
- Supports APP Scan Code / RFID Card Charging for flexible access
- EV Standards: IEC 62196, IEC 61851

CAPACITY		MODELS		
		60kW	120kW	150kW
INPUT PARAMETERS	Input Voltage (Vac)	415 VAC ±15%, 50Hz ±3%		
	THD	≥ 5% of Nominal Voltage		
	Power Factor	≥ 0.99 (Full Load)		
	Wires	3 - Phase, 5 - Wire AC ( L1, L2, L3, N and PE)		
POWER OUTPUT	Output Voltage DC (Vdc)	200-1000 vdc		
	Standard/Connector	CCS-2		
	Number of Connector/Gun	2		
	Efficiency	≥ 94% (full load)		
PROTECTION AND SAFETY	Safety Parameters	Over Voltage, Under Voltage, Over Current, Short Circuit, Surge Protection, Over Temperature, Ground Fault Protection, Residual Current, Emergency Shutdown with alarm, Protection against electric shock		
USER INTERFACE AND CONTROL FUNCTIONS	Display Screen	7" LCD TFT Touch Screen		
	Languages - Supported	English		
	Push Button	Emergency Stop (Mushroom Red)		
	Charging Option	Grid Responsive Metering		
	Visual Indication	Presence of Input Supply, Errors Indicators, State of Charge		
	User Authentication	Using mobile application or User Interface (OCPP gives only a field mandate, media to be used is open) / QR Code / RFID Card / Password Login		
	Payment	RFID Card Wallet or App Wallet / Service		
COMMUNICATION	Between EV Charger & EV	IEC 62196, IEC 61851		
	Between EV & Central Server	OCPP v1.6 or above - 10/100 Base-T Ethernet (Standard) or Optical GSM Modem (2G/3G/4G) or Wireless (Optional)		
MECHANICAL	Protection	IP 54		
	Cooling	Forced Air Cooling		
	Charging Cable Length	5 Meter		
	Operating Temperature	0°C to 55°C		
	Storage Temperature	0°C to 60°C		
	Humidity (Non-Condensing)	5% TO 95%		

*Subject to change without prior notice.*

**MTEKPOWER**



**DUAL GUN QUICK**

DC CHARGER

**180kW - 240kW**

The Dual Gun Quick DC Charger (DC 180kW/240kW) is specifically designed to meet the fast-charging needs of public transport vehicles and fleet operations. With a robust charger base, advanced logistics, intelligent controls, and back-end support, it offers an efficient, safe, and comprehensive charging solution for growing public transport systems. This high-power charger supports rapid network deployment and provides reliable charging for electric vehicles with an all-weather durable enclosure, meeting the CCS2 standard.

**KEY FEATURES**

- High-Power Quick Charging for fast and efficient service
- Robust and All-Weather Enclosure (IP54) for both indoor and outdoor use
- Easy Installation and Maintenance for hassle-free operation
- Max 200A High Output Current for fast vehicle turnaround
- 7" Full-Color Touchscreen Display for user-friendly operation
- RFID Reader for secure access and management
- Intuitive Human-Machine Interface for seamless interaction
- Future-proof Connectivity with OCPP 1.6 and beyond
- Wide DC Output Voltage Range (200-1000VDC) ensuring compatibility with all EVs
- Modular Architecture for flexible scalability

TECHNICAL DATA		MODELS	
CAPACITY		180kW	240kW
INPUT PARAMETERS	Input Voltage (Vac)	415 VAC ±15%, 50Hz ±3%	
	THD	≥ 5% of Nominal Voltage	
	Power Factor	≥ 0.99 (Full Load)	
	Wires	3 - Phase, 5 - Wire AC ( L1, L2, L3, N and PE)	
POWER OUTPUT	Output Voltage DC (Vdc)	200-1000 vdc	
	Standard/Connector	CCS2 (DC)	
	Number of Connector/Gun	2	
	Efficiency	≥ 94% (full load)	
PROTECTION AND SAFETY	Safety Parameters	Over Voltage, Under Voltage, Over Current, Short Circuit, Surge Protection, Over Temperature, Ground Fault Protection, Residual Current, Emergency Shutdown with alarm, Protection against electric shock	
USER INTERFACE AND CONTROL FUNCTIONS	Display Screen	7" LCD TFT Touch Screen	
	Languages - Supported	English (Other languages optional)	
	Push Button	Emergency Stop (Mushroom type)	
	Charging Option	Grid Responsive Metering	
	Visual Indication	Presence of Input Supply, Errors Indicators, State of Charge	
	User Authentication	Using mobile application or User Interface (OCPP gives only a field mandate, media to be used is open) / QR Code / RFID Card / Password Login	
	Payment	RFID Card Wallet or App Wallet / Service	
COMMUNICATION	Between EV Charger & EV	CAN Based Communication as per GB/T 27930-2015	
	Between EV & Central Server	OCPP v1.6 or above - 10/100 Base-T Ethernet (Standard) or Optical GSM Modem (2G/3G/4G) or Wireless (Optional)	
MECHANICAL	Protection	IP 54	
	Cooling	Forced Air Cooling	
	Charging Cable Length	5 Meter	
	Operating Temperature	0°C to 55°C	
	Storage Temperature	0°C to 60°C	
	Humidity (Non-Condensing)	5% TO 95%	

Subject to change without prior notice.

**MTEKPOWER**



**COMBO 3-IN-1**

**ADC CHARGER**  
(CCS-2+CHADeMo+Type 2)

**82kW - 142kW**

The **MTEKPOWER Combo EV Charger** is an advanced outdoor, multi-standard charging station designed to provide seamless, simultaneous DC and AC charging. It delivers continuous power through three distinct charging outlets, including CCS-2 and CHAdeMO for DC, and a 22kW Type-2 for AC. Ideal for fleet management, medium-to-large parking lots, highways, food plazas, and service stations.



**FEATURES**

- Dual Technology for simultaneous DC and AC charging
- Compact and Modern Design for easy installation and operation
- High Efficiency with a high-power factor, low input harmonic current, no extra reactive power compensation needed
- Hot-Swap Modular Design for easy maintenance
- Wide Voltage Range (200-1000VDC), supporting all current and future EVs
- Three Independent Outlets: CCS-2, CHAdeMO, and Type-2
- Daylight-Readable 7" Full Color Touchscreen Display
- Open Charge point Protocol (OCPP) Compatibility for seamless integration and management
- RFID Card / App Scan Code Charging for easy access control
- EV Standards: IEC 62196, IEC 61851 (CCS-2 & JEVS G105 for CHAdeMO)

CAPACITY		MODELS	
		82kW	142kW
INPUT PARAMETERS	Input Voltage (Vac)	415 VAC ±15%, 50Hz ±3%	
	THD	≥ 5% of Nominal Voltage	
	Power Factor	≥ 0.99 (Full Load)	
	Wires	3 - Phase, 5 - Wire AC ( L1, L2, L3, N and PE)	
POWER OUTPUT	DC Output	60 kW (30 kW CCS-2 + 30 kW CHAdeMO or 60 kW on CCS-2 gun during power sharing mode)	120 kW (60 kW CCS-2 + 60 kW CHAdeMO or 120 kW on CCS-2 gun during power sharing mode)
	AC Output	Type-2, AC 3 Phase, up to 22 kW Max	
	Standard/Connector	CCS-2, IEC 62196 Type-2 and CHAdeMO	
	Number of Connector/Gun	3	
	Efficiency	≥ 94% (full load)	
PROTECTION AND SAFETY	Safety Parameters	Over Voltage, Under Voltage, Over Current, Short Circuit, Surge Protection, Over Temperature, Ground Fault Protection, Residual Current, Emergency Shutdown with alarm, Protection against electric shock	
USER INTERFACE AND CONTROL FUNCTIONS	Display Screen	7" LCD TFT Touch Screen	
	Languages - Supported	English	
	Push Button	Emergency Stop (Mushroom Red)	
	Charging Option	Grid Responsive Metering	
	Visual Indication	Presence of Input Supply, Errors Indicators, State of Charge	
	User Authentication	Using mobile application or User Interface (OCPP gives only a field mandate, media to be used is open) / QR Code / RFID Card / Password Login	
COMMUNICATION	Payment	RFID Card Wallet or App Wallet / Service	
	Between EV Charger & EV	IEC 62196, IEC 61851 for Type-2 & CCS-2 and JEVS G105 for CHAdeMO	
	Between EV & Central Server	OCPP v1.6 or above - 10/100 Base-T Ethernet (Standard) or Optical GSM Modem (2G/3G/4G) or Wireless (Optional)	
MECHANICAL	Protection	IP 54	
	Cooling	Forced Air Cooling	
	Charging Cable Length	5 Meter	
	Operating Temperature	0°C to 55°C	
	Storage Temperature	0°C to 60°C	
	Humidity (Non-Condensing)	5% TO 95%	

*Subject to change without prior notice.*